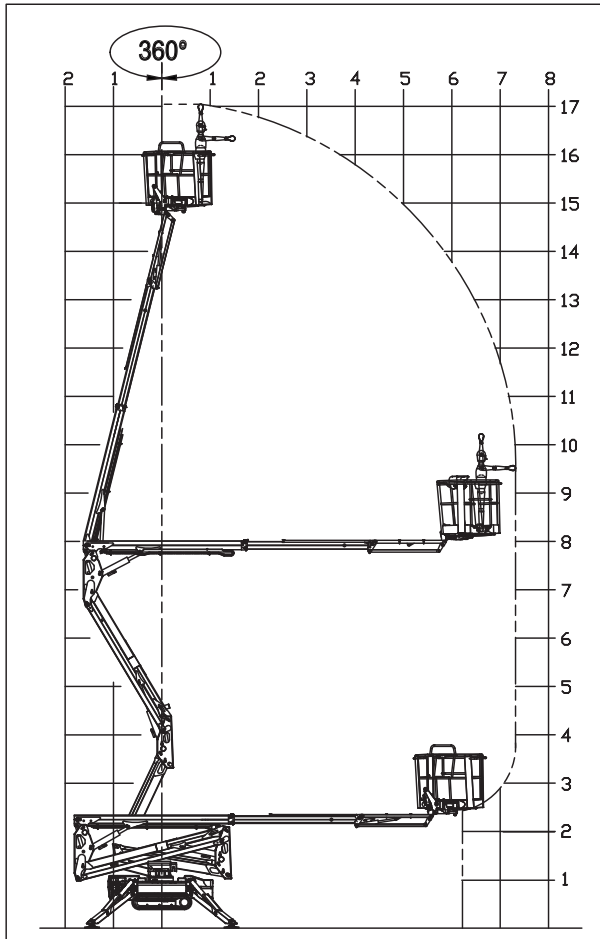
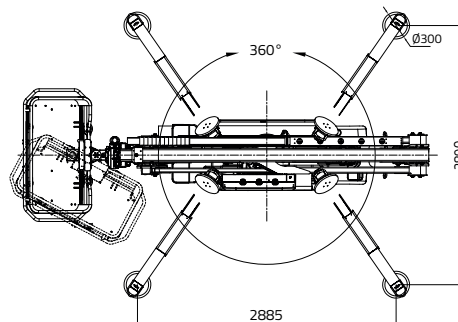
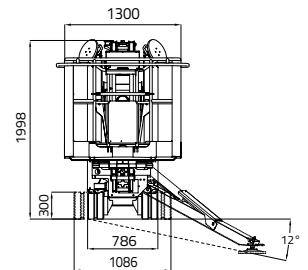
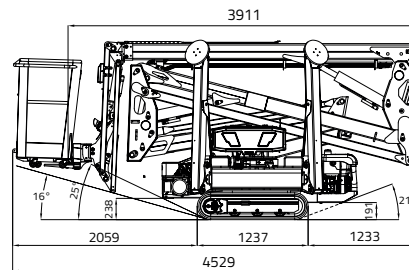


LL17.75 MK3



CAPACITY 230 KG
(2 persons 80x2=160 kg + tool box 70 kg)



17,06 m

1.335 x 690 x h. 1.100 mm

2.885 x 2.890 mm

7,50 m

124° (+/-62°)

Automatic set up system IIIS std.

4,53 m

16° / 28,7%

Remote control

3,91 m

798 - 1086 mm

GPRS-GPS

1,99 m

1.731 daN - 2,45 daN/cm²

R.A.H.M.

Lithium-ion battery pack 4,3 kWh
(36V - 120Ah)



 LL17.75 *MK3*



PETROL ENGINE

Brand.....HONDA
 Type GX390
 Pistons no. and displacement.....
 single-cylinder 389 cm³
 Max gross power
 11,7HP - 8,7 kW @ 3600 rpm (GX390)
 Electrical start..... 12 volt

DIESEL ENGINE

Brand..... HATZ
 Type 1B40 - HD Autorev
 Pistons no. and displacement.....
 single-cylinder 462 cm³
 Max gross power
 10 HP - 7,5 kW @ 3600 rpm
 Electrical start..... 12 volt

LITHIUM-ION SYSTEM

Lithium-ion powered 4,3 kWh
 Onboard battery charger
220V 50Hz or 110V 50Hz
 Autonomy..... 4-5 h
 Recharge time on flat batteries
4 h (indicative)
 Recharge time to 80% on flat batteries...
 2 h (indicative)

HYDRAULIC PUMPS

Electric motorno. 2 gear pumps

TRACKED UNDERCARRIAGE

Track tensionergrease-filled
 Rollers no. per side 3 + slide

Translation speed with 3rd auto2speed:

- petrol engine 0,6 - 1,4 - 2,7 km/h
 - diesel engine 0,7 - 1,8 - 3,6 km/h
 - lithium-ion system..... 0,4 - 0,8 - 1,6 km/h

WEIGHT MACHINE:

- petrol / diesel engine..... 2.230 kg
 - lithium-ion system..... 2.300 kg

MAX WIND SPEED 12,5 m/s