

# Genie® Z<sup>®</sup>-51/30J RT

## Specifications

Models	Z-51/30J RT	
<b>Measurements</b>	<b>US</b>	<b>Metric</b>
Working height max. <sup>(1)</sup>	57 ft 8 in	17.59 m
Platform height max.	51 ft 2 in	15.59 m
Horizontal reach max.	30 ft 9 in	9.37 m
Up and over clearance max.	24 ft 3 in	7.39 m
<b>A</b> Platform length	2 ft 6 in	0.76 m
<b>B</b> Platform width	6 ft	1.83 m
<b>C</b> Height - stowed	7 ft	2.13 m
<b>D</b> Length - stowed	24 ft 11 in	7.58 m
<b>E</b> Width	7 ft 6 in	2.29 m
<b>F</b> Wheelbase	6 ft 8 in	2.03 m
<b>G</b> Ground clearance - center	1 ft 3 in	0.37 m

## Productivity

Lift capacity max. - unrestricted	500 lb	227 kg
Platform rotation	160°	
Jib length	5 ft	1.52 m
Vertical jib rotation	135°	
Turntable rotation	355°	
Turntable tailswing	0 in	0 cm
Drive speed - stowed <sup>(2)</sup>	5 mph	8 km/h
Drive speed - raised	0.61 mph	0.98 km/h
Gradeability - stowed <sup>(2)</sup>	45%	
Tilt sensor activation (front to back/side to side)	2.5° - 4.5° / 4.5°	
Turning radius - inside/outside	5 ft 6 in / 14 ft 9 in	1.68 m / 4.50 m
Tires (foam-filled)	315/55 D20	

## Power

Power	Diesel
Auxiliary power unit	12V DC
Hydraulic tank capacity	24 gal / 90.9 L
Fuel tank capacity	17 gal / 64 L

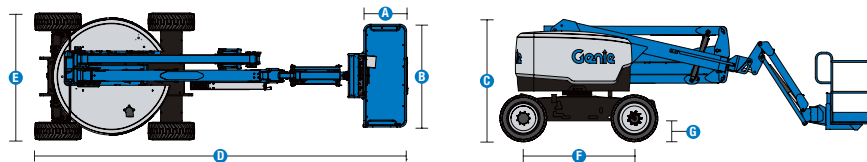
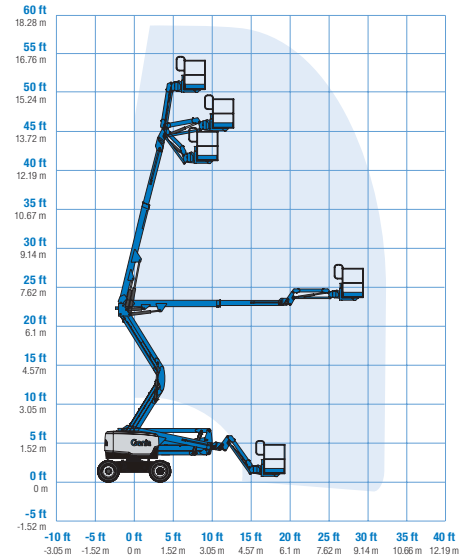
## Weight<sup>(3)</sup> and Floor Loading<sup>(4)</sup>

Weight	16,300 lb	7,394 kg
Tire contact pressure	80 psi	552 kPa
Occupied floor pressure (tires)	230 psf	11.01 kPa

## Sound and Vibration Levels

Sound Pressure level (ground workstation)	86 dBA
Sound Pressure level (platform workstation)	79 dBA
Vibrations	8 ft 2 in/s <sup>2</sup> / 2.5 m/s <sup>2</sup>

## Range of motion Z-51/30J RT



(1) The metric equivalent of working height adds 2 m to platform height. The imperial equivalent adds 6 ft to platform height.  
 (2) Gradeability applies to driving on slopes and may vary depending on options and machine configurations. See operator's manual for details regarding slope ratings.  
 (3) Weight refers to standard configuration and may vary depending on options and/or country standards.  
 (4) Floor loading information is approximate and may vary depending on options and machine configurations. It should be used only with adequate safety factors.

# Genie® Z<sup>®</sup>-51/30J RT

## SKU: Standard Model

- **Z5100001CV0003:** Z-51/30J RT, 220V, 4WD
- **Z5100001CV0002:** Z-51/30J RT, 220V, Stage IIIA, 4WD
- **Z5100001CV0002:** Z-51/30J RT, 220V, Control box covers, 4WD

\* Build to Order

Option availability		S	S+	BtO
Power	49 hp, 36 kW, Deutz TD2.2L, Turbo Diesel, Stage V	✓	✓	✓
	Cold weather package		○	○
	Diesel catalytic scrubber muffler (T4i/Stage IIIA)			○
	Engine gauge package	✓	✓	○
	Positive air shutdown system			○
	Auxiliary power unit	✓	✓	✓
	Engine protection package	✓	✓	✓
	6ft/1.83m dual-entry platform with side swing gate	✓	✓	✓
Platform	Power to platform, no RCBO	✓	✓	✓
	Power to platform with RCBO		○	○
	Air line to platform			○
	Control box covers		○	○
	Lift Guard Full Mesh panels			○
	Lift Guard Half Mesh panels			○
	Light Package: drive and work lights			○
	Platform auxiliary top rail			○
	Platform level cutout		○	○
	3kW AC Generator, 110V/50Hz			○
	Lift Power 3kW AC Generator, 110V/50Hz			○
	2.2 kW AC Generator, 220V/50Hz			○
	3kW AC Generator, 220V/50Hz			○
	Lift Power 3kW AC Generator, 220V/50Hz			○
	AC Power cord to platform	✓	✓	✓
	Drive enable system	✓	✓	✓
	Horn	✓	✓	✓
	Lift Guard Contact Alarm	✓	✓	✓
	Lift Tools Work Tray	✓	✓	✓
	Platform load sense system	✓	✓	✓
Proportional controls	✓	✓	✓	
Self-leveling platform	✓	✓	✓	
Travel alarm package: flashing beacons, descent, travel and tilt alarms	✓	✓	✓	
Chassis	Lift Connect Telematics	✓	✓	✓
	Lift Connect with Access Manager upgrade		○	○
	Eco32 biodegradable hydraulic oil			○
	Rough terrain, foam-filled tires	✓	✓	○
	Rough terrain, foam-filled, non-marking tires			○
	Chassis tilt lift function cut-out		○	○
	2 speed wheel motors	✓	✓	✓
	Active oscillating axle	✓	✓	✓
	Chassis tilt drive function cut-out	✓	✓	✓
	Dual parallelogram lift linkage	✓	✓	✓
	Hour meter	✓	✓	✓
	Hydraulic oil cooler	✓	✓	✓
Positive traction drive	✓	✓	✓	

Positive air shutdown Stage V engines only  
 Engine gauge package standard on Stage IIIA engine

- S Standard
- S+ Standard +
- BtO Build to Order
- ✓ Standard Features
- Options



Rugged Terrainability



Zero Tailswing



Dual Parallel Linkage



### Genie Genuine Accessories<sup>(1)</sup>

- Lift Tools Productivity Tools
- Lift Connect Telematics
- Tech Pro Link Handheld Device

(1) More accessories available from Genie Genuine Parts.

Product specifications are subject to change without notice or obligation. Photographs and/or drawings herein are for illustrative purposes only. Refer to the appropriate Operator's Manual for instructions on proper equipment use. Failure to follow instructions in the Operator's Manual may result in serious injury or death. The only warranty applicable to our equipment is the standard written warranty applicable to the particular product and sale and we make no other warranty, express or implied. Products and services listed may be trademarks, service marks or trade names of Terex Corporation and/or their subsidiaries in the USA and many other countries. Terex, Genie, Quality By Design, Xtra Capacity, Lift Power, Lift Guard, Lift Tools, Lift Connect and Tech Pro Link are registered trademarks of Terex Corporation or its subsidiaries.