

# Meet

## DINO 120TL

### DINO® TRAILER MOUNTED MEWPs

#### Standard features in DINO 120TL:

- MyDINO Telematics
- Driving system; easy to move at work site
- Ultra-light, total weight only 1263 kg
- 1-person steel basket, capacity 130 kg

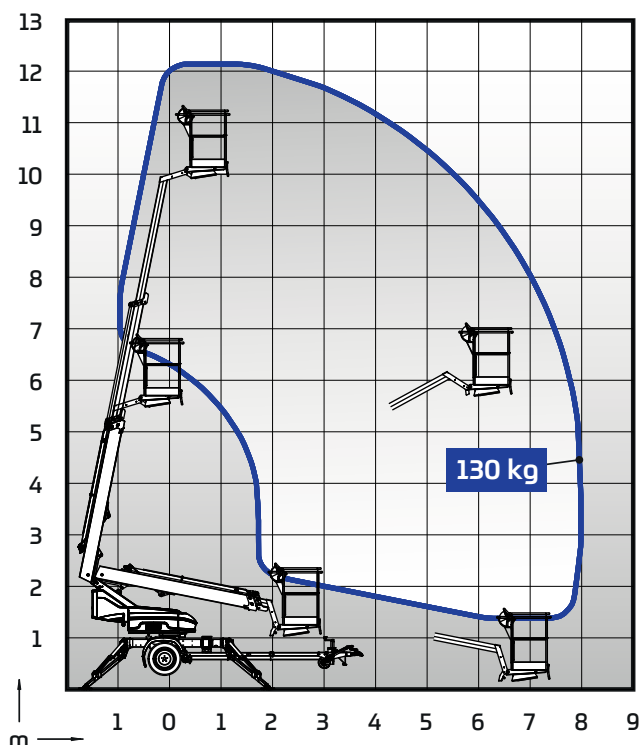
#### Technical data

	120TL
Working height	12.0 m
Platform height	10.0 m
Maximum outreach (130 kg)	8.1 m
Lifting capacity	130 kg
Boom rotation	±355°
Support width	3.8 m
Support length	3.8 m
Basket size	0.75 x 0.8 m
Transport width	1.53 m
Transport height	1.99 m
Transport length	5.3 m
Weight	1263 kg
Boom control	2-speed on/off
AC socket in the basket x 2	std
Electric motor	2.2 kW 230 VAC
Driving device, Controlled by manual hydraulic valve	Standard
Narrow axle width <100cm	optional



#### Options available for DINO 120TL:

- Outrigger support indicator
- Extra outrigger pads 300 x 300 x 30 mm + bracket
- Lockable tool / harness box
- Special color
- Narrow axle (<100 cm) - Optimized for doorway clearance of 100x200cm



# DINOLIFT

UP TO THE JOB

Dinolift Oy | Raikkolantie 145 • FI-32210 LOIMAA, FINLAND

Tel: +358 (0)20 1772 400 • E-mail: info@dinolift.com

[www.dinolift.com](http://www.dinolift.com)

Technical specifications are subject to change without prior notice.

©Dinolift Oy | 18.8.2025